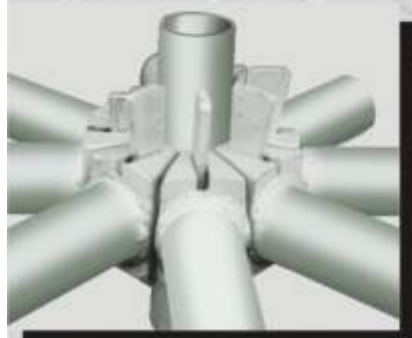




engineered to deliver



## SCAFFOLDING SYSTEMS



Munish has established itself as one of the most prominent and reliable player in the Scaffolding business since 1991. Munish manufactures M-Lock, M-Stage, All-round Scaffolding Systems and accessories as per international standards and customised to requirements of the customers.



**M-LOCK**

**M-LOCK STANDARD**



Sizes: 1 / 1.5 / 2 / 2.5 / 3 mtr.

**M-LOCK INTERMEDIATE TRANSOM**



**M-LOCK LEDGER**



Sizes: 0.6 / 0.9 / 1.0 / 1.2 / 1.3 / 1.6 / 1.8 / 2.5 mtr.

Sizes: 0.565 / 0.795 / 1.2 / 1.3 / 1.8 / 2.5 mtr.

**M-LOCK OMEGA INTERMEDIATE TRANSOM**



**M-LOCK HOP UP BRACKETS**  
Tubular & Omega



Sizes: 1 Board, 2 Board & 3 Board

Sizes: 0.795 / 1.3 / 1.8 / 2.5 mtr.

**M-LOCK BLADE ENDS**



LEDGER  
BLADE END

SWIVEL  
BLADE END

OMEGA  
BLADE END

**M-LOCK SWIVEL FACE BRACES**



Sizes: 1.8 x 1.5 mtr., 1.8 x 2.0 mtr., 2.5 x 1.5 mtr. & 2.5 x 2.0 mtr.

**M-LOCK CUPS**



TOP CUP  
(3 Lug & 4 Lug)



PRESSED BOTTOM CUP  
(4mm & 5mm thick)

## M-STAGE

### M-STAGE STANDARD



Sizes: 1/ 1.5/ 2/ 2.5/ 3 mtr.

### M-STAGE ANGLE TRANSOM



Sizes: 0.51/ 0.71/ 1.0/ 1.2/ 1.8/ 2.4 mtr.

### M-STAGE LEDGERS



Sizes: 0.71/ 1.0/ 1.2/ 1.8/ 2.4 mtr.

### M-STAGE BRACES



Sizes: 1.7/ 2.1/ 2.4/ 2.7/ 3.2/ 3.6 mtr.

### M-STAGE BRACKETS



Sizes: 1 Board, 2 Board & 3 Board



### M-STAGE TIE BAR



Sizes: 0.71/ 1.0/ 1.2/ 1.8/ 2.4 mtr.

## ALL ROUND SYSTEM

### ALL ROUND STANDARDS



Sizes: 0.5/ 1.0/ 1.5/ 2.0/ 2.5/ 3.0 mtr.

### ALL ROUND LEDGERS



Sizes: 0.65 / 1.06 / 1.15 / 1.57 / 1.62 / 1.82 / 2.13 / 2.43 / 3.05 mtr.

### ALL ROUND BRACES

Sizes: 1.150 / 1.572 / 1.626 / 1.829 / 2.130 / 3.050 mtr.

### ALL ROUND BRACKETS

Sizes: 1 Board, 2 Board & 3 Board

## STEEL BATTENS



Sizes: 1.3 / 1.8 / 2.5 mtr.

## PROPS



Sizes: (in mtrs.)  
Close Ht. / Open Ht.  
1.07 / 1.82  
1.75 / 3.12  
1.98 / 3.35  
2.59 / 3.95  
3.20 / 4.87

## FINISH

Hot Dip Galvanized, Painted, Powder Coated  
and Electroplated.

## BASE JACKS, U-HEAD JACKS & UNIVERSAL JACKS

Solid & Hollow



Sizes: Length: 550/ 650/ 750/ 850/ 1000 mm Rod Diameter: 34/ 38 mm  
Tube Diameter: 34/ 38/ 48 mm Thickness: 4 mm  
Base Plate : 150 x 150 x 5/ 6/ 8 mm

**Munish International**

C-128, Phase-V, Focal Point, Ludhiana- 141 010 (India) Tel: +91-161-2671481, 2671828  
Fax: +91-161-2671559 Email: [exports@munishforge.com](mailto:exports@munishforge.com) Website: [www.munishforge.com](http://www.munishforge.com)