



engineered to deliver



FLANGES



THREADED

Flanges are forged and machined, as per ANSI B-16.5 from the materials ASTM - A105 / A105 N, Low Temperature Flanges from ASTM / ASME SA350 LF2 (Charpy V Notch test as per standard) and Stainless Steel from S 304 / S 316. Materials conforming to NACE MR-01-75 latest edition.

The product range includes SORF, SOFF, BLRF, BLFF, WNRF (XS, XXS, STD & Schedule 40 & 80), WNFF (XS, XXS, STD & Schedule 40 & 80), SWRF (XS & STD), SWFF (XS & STD), Threaded RF, Threaded FF & LJ.

STAINLESS STEEL (WELD NECK)



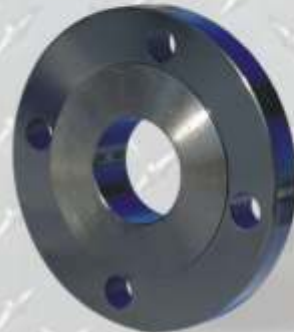
SLIP ON



BLIND



REDUCING FLANGE



SOCKET WELD



LAP JOINT



WELD NECK



PRESSURE CLASSES

150 Lbs
300 Lbs
600 Lbs
900 Lbs
1500 Lbs
2500 Lbs

SIZE RANGE

(Nominal Pipe Diameter)
½" to 16"
½" to 12"
½" to 10"
½" to 8"
½" to 6"
½" to 6"

FINISH

Fully Machined as per AARH relevant standard or as per requirement of the customer.

COATING

Self colour, Black painted or as per customer's requirement.

HEAT TREATMENT

Conform to the relevant standards or as per customer requirements.

TEST CERTIFICATE

As per standard EN10204-3.1B or as per customer requirements.

Munish International

C-128, Phase-V, Focal Point, Ludhiana- 141 010 (India) Tel: +91-161-2671481, 2671828
Fax: +91-161-2671559 Email: exports@munishforge.com Website: www.munishforge.com